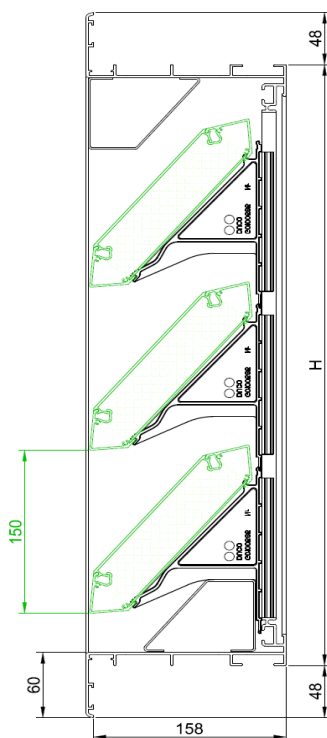


# TECHNICAL DATA SHEET

<b>TYPE</b>	<b>DUCOGRILLE ACOUSTIC G 150</b>
<b>DESCRIPTION</b>	Louvre "build-in" wall grille with acoustic blades, heavy duty
<b>SHAPE OF BLADE</b>	Acoustic 150
<b>VISUAL FREE AREA</b>	74%
<b>PHYSICAL FREE AREA</b>	35%
<b>PITCH</b>	150 mm
<b>WIDTH</b>	Minimum 250mm
<b>HEIGHT</b>	Minimum 250mm, FIXED PITCH 150mm
<b>DEPTH TO FIT</b>	158 mm
<b>FLANGE</b>	48 mm
<b>ACOUSTIC SPECIFICATIONS</b>	RW (C,Ctr) = 11(-1,-2) db
<b>MESH</b>	- standard insect mesh 2,3 x 2,3 SS - optional with mesh 6 x 6 mm - optional with mesh 20 x 20 mm
<b>DRIP TRAY PROFILE</b>	Integrated in the frameprofile
<b>MATERIALS</b>	Aluminium :           AlMg 0,5Si Profile thickness : min. 1,5mm Plastic parts:           clips polyamide PA 6.6 - reinforced with glass fibre
<b>REACTION TO FIRE</b>	Damping material: A1 (EN 13501-1)
<b>FIRE RESISTANCE</b>	Damping material: non-flammable (NEN 6064)
<b>SURFACE TREATMENT</b>	- enamelled polyester powder coating according QUALICOAT

K-factor	
Intake	11,04
Exhaust	10,96



Water resistance	
BSRIA (EN13030)	
v (m/s)	class
0	B
0,5	C
1	C
1,5	C
2	D
2,5	D