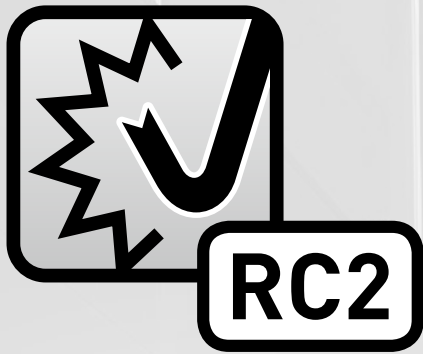


# Duco's **intrusion-resistant** solutions

Ventilation louvres, continuous louvre walls and louvre doors of RC2 resistance class



- Complete range of louvres
- Complies with European RC2 regulation
- Louvres, continuous louvre walls and louvre doors



## Duco's intrusion-resistant **total solutions**

As a manufacturer of products including ventilation louvres and louvre walls, Duco's range offers a number of **innovative, patented solutions** that comply with **RC2 resistance class** according to European standards. Duco has quite a few intrusion-resistant solutions that are extremely suitable for **night ventilation / purge ventilation**.

Duco's intrusion-resistant ventilation louvres, continuous louvre walls and doors can be used in **access areas, datacentres, bicycle storage, plant and technical rooms ...**

Test reports of all products are available on request.



## ► Intrusion-resistant VENTILATION LOUVRES



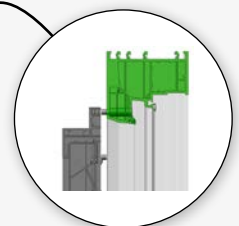
**++ G 30Z**  
 prEN 1627  
 up to and including 1630  
 (September 2017)  
  
**++ M 30Z**  
 EN 1627:2011  
 NEN 5096: 2007  
 + C2:2011

### DucoGrille **Solid++ 30Z**

This intrusion-resistant ventilation louvre with reinforced frame section and sturdy Solid 30Z louvres is available both as a **recessed mounted or surface-mounted louvre**.

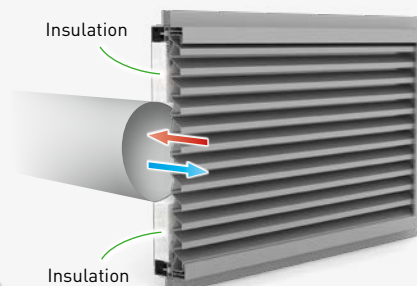
**++ G 30Z**  
 Recessed  
 mounted wall  
 louvre with  
 flange

**++ M 30Z**  
 Surface-mounted  
 wall louvre  
 on a frame



### DucoGrille **Solid ISO 30Z**

The DucoGrille Solid ISO 30Z is a window louvre that is both architecturally aesthetic and has good **thermal insulation**. The window louvre can be connected to both round and rectangular air ducts.



NEN 5096:2012  
 &  
 EN 1627:2011



NEN 5096:2012  
 &  
 EN 1627:2011

### DucoGrille **NightVent**

The DucoGrille NightVent is a **glass-replacing ventilation hatch** which, because it supplies large ventilation flows ensures efficient cooling of any building. The DucoGrille NightVent consists of an intrusion-resistant and insect-resistant external louvre, and an inner panel with a flat finish.



## ► Intrusion-resistant **CONTINUOUS LOUVRE WALL SYSTEMS**



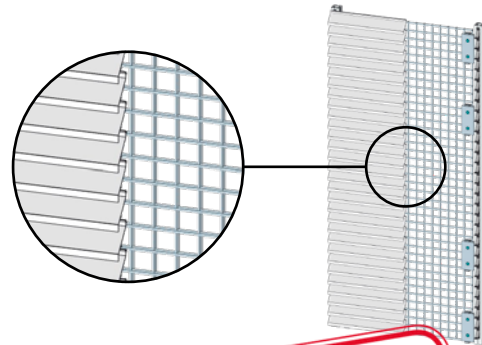
### DucoWall

Duco has developed a **broad and innovative** range of continuous louvre wall systems: water-resistant, with high ventilation capacity and sound-absorbing...

Now, **any type of continuous louvre wall can be made intrusion-resistant**, by incorporating Duco's patented solution. This brings the louvre wall into compliance with the RC2 resistance class according to European regulations. This compact solution also ensures that the **recess depth of the RC2 louvre wall remains the same in comparison with standard louvre walls**, which guarantees a **uniform façade**.

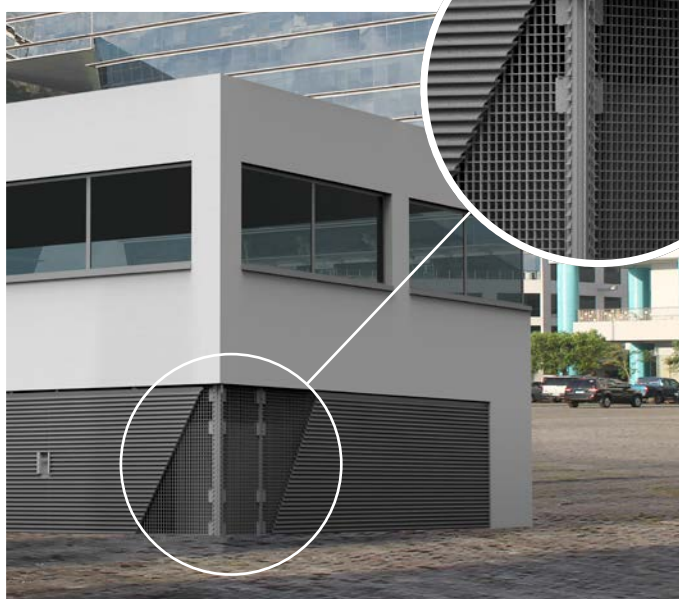
Furthermore, the louvre walls can be **combined with DucoDoor louvre doors**, which are also available in an intrusion-resistant version.

**NEW**



**PATENTED**

EN 1627:2011  
&  
NEN 5096:2012  
+ A1:2015



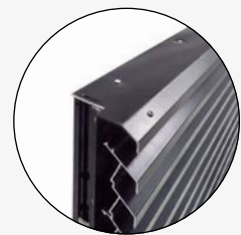
## ► Intrusion-resistant **LOUVRE DOORS**

Duco's louvre doors are ideal in combination with Duco's louvre wall system for a tight, uniform façade. They are available as a ventilated louvre door or as a (moisture-proof) false louvre door.



### DucoDoor **Louvre**

This type of louvre door can easily be integrated into a louvre wall as it can be made using any of the **full range of Solid, Classic and Basic blades**.



### DucoDoor **Grille**

As a **free standing access door**, the DucoDoor Grille is perfectly suited to non-louvre walls, such as in plant rooms.

All DucoDoor doors are made to measure and are available in up to 3 m useful height and width.



# HOME OF OXYGEN

At Duco, we provide oxygen to each building in a perfectly natural way. Allowing fresh air from the outside to enter a building directly through the building envelope, without the need for complex air ducting systems, is the ultimate guarantee of a healthy indoor climate. The occupant's health and well-being are therefore at the forefront with Duco.

A well-thought-out combination of basic ventilation, intensive ventilation and solar shading is essential to ensure optimum air quality. Duco provides an innovative solution for residential buildings, offices, schools or care centres where everyone feels at home.

## A SOLUTION FOR EVERY SITUATION!

Discover our products in these brochures:



Wall and window louvres



Louvre wall systems



Architectural solar shading

call **+32 58 33 00 66** or  
e-mail **info@duco.eu**

We will be happy to provide you with any further information on our products and new developments.

We inspire at [www.duco.eu](http://www.duco.eu)



... Like us



Follow us ...

**DUCO**  
Ventilation & Sun Control